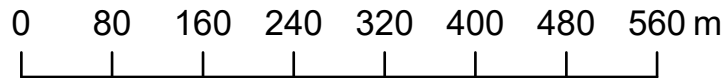
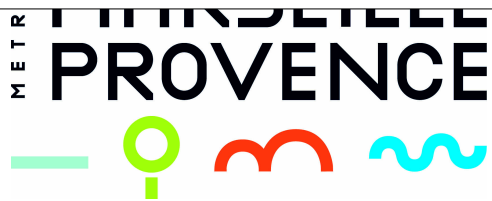


Publié par : urbanisme  
Date de dépôt : 20/01/2025  
Date de retrait : Non défini

Date: 20/11/2024

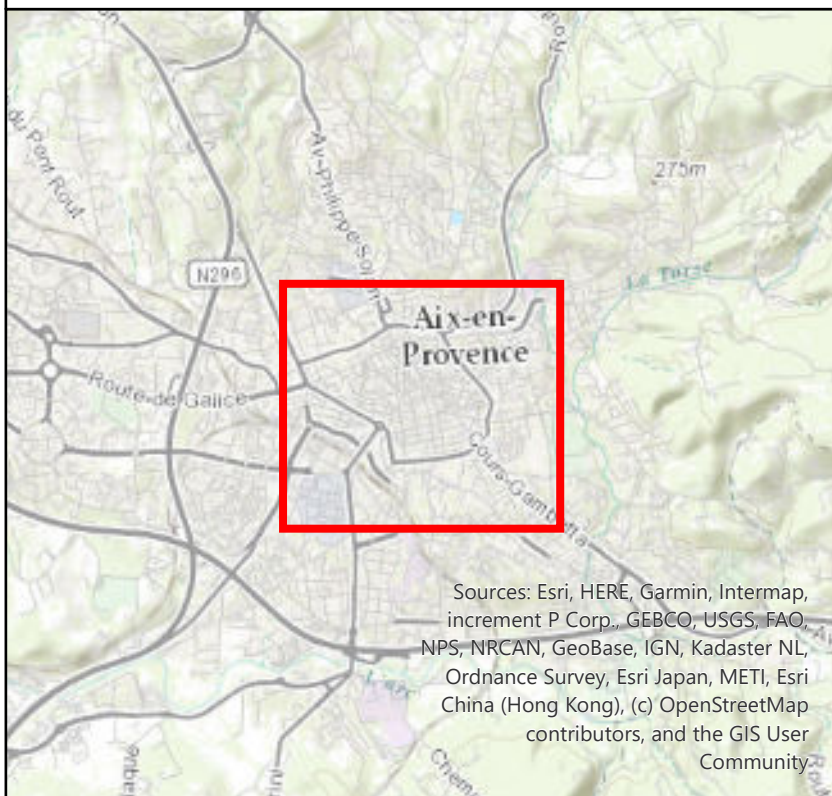


Origine cadastre ©  
Droit de l'Etat réservés 2024



 Périimètre du Droit de Préemption Renforcé

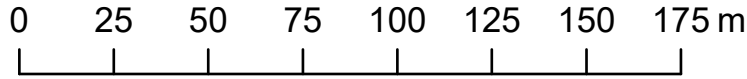
# Plan 01 : AIX-EN-PROVENCE : DPUR -



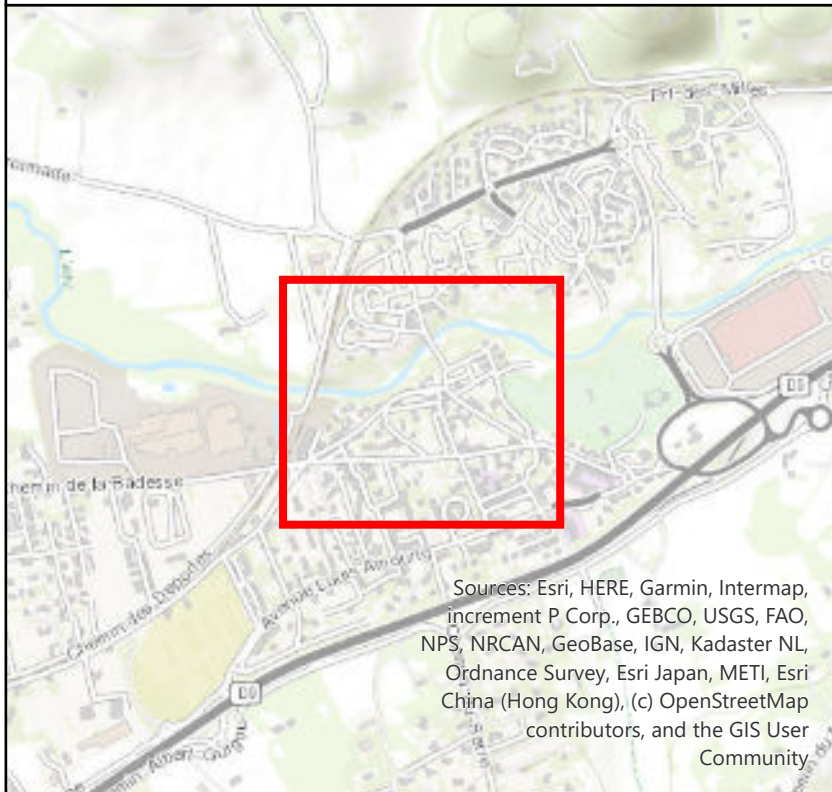
Sources: Esri, HERE, Garmin, Intermap, increment P Corp., GEBCO, USGS, FAO, NPS, NRCAN, GeoBase, IGN, Kadaster NL, Ordnance Survey, Esri Japan, METI, Esri China (Hong Kong), (c) OpenStreetMap contributors, and the GIS User Community





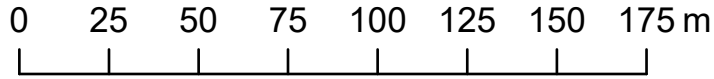


 Périmètre du Droit de Prémption Renforcé

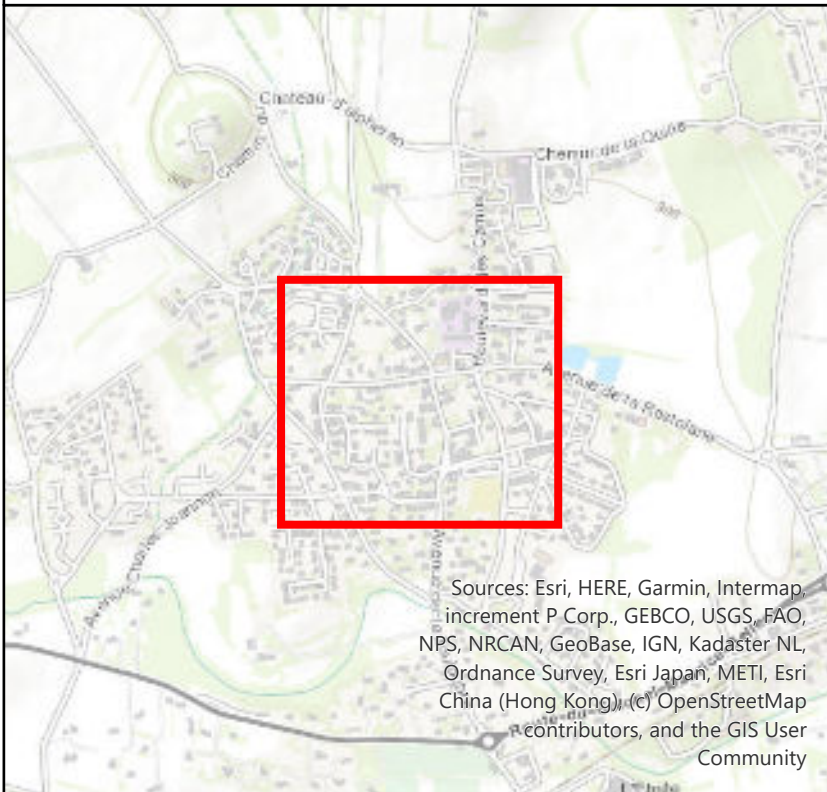
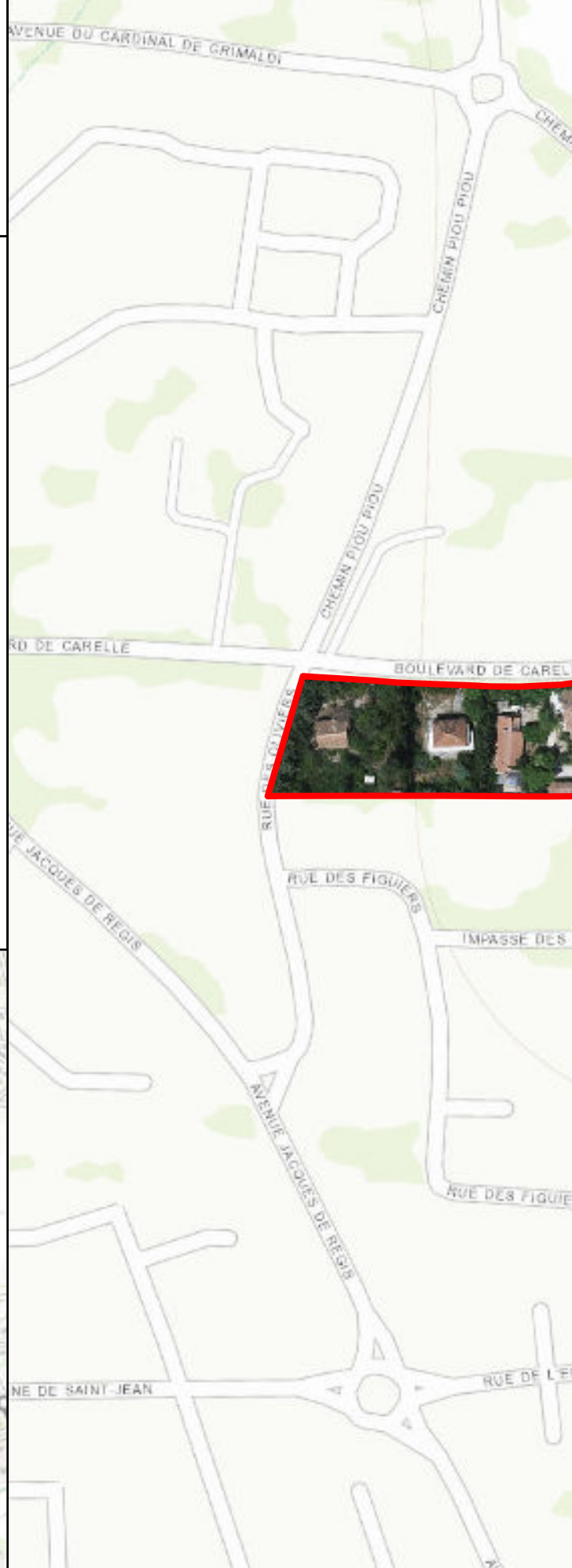


Sources: Esri, HERE, Garmin, Intermap, increment P Corp., GEBCO, USGS, FAO, NPS, NRCAN, GeoBase, IGN, Kadaster NL, Ordnance Survey, Esri Japan, METI, Esri China (Hong Kong), (c) OpenStreetMap contributors, and the GIS User Community



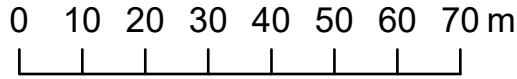


 **Périmètre du Droit de Préemption Renforcé**

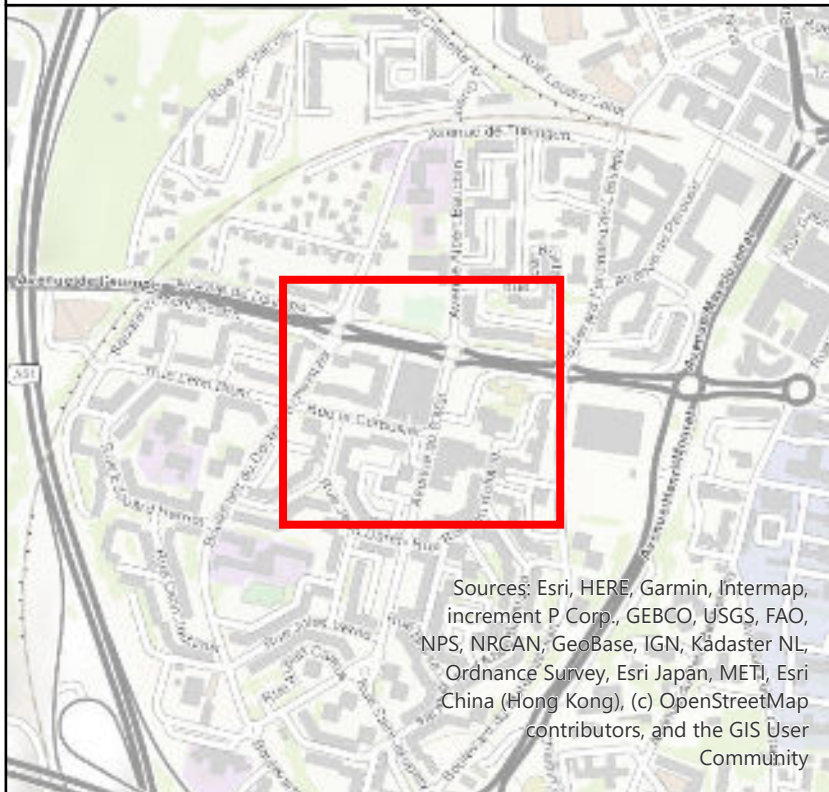


Sources: Esri, HERE, Garmin, Intermap, increment P Corp., GEBCO, USGS, FAO, NPS, NRCAN, GeoBase, IGN, Kadaster NL, Ordnance Survey, Esri Japan, METI, Esri China (Hong Kong), (c) OpenStreetMap contributors, and the GIS User Community





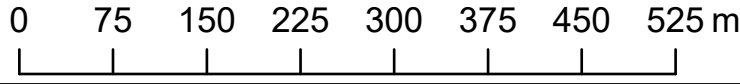
 Périimètre du Droit de Préemption Renforcé



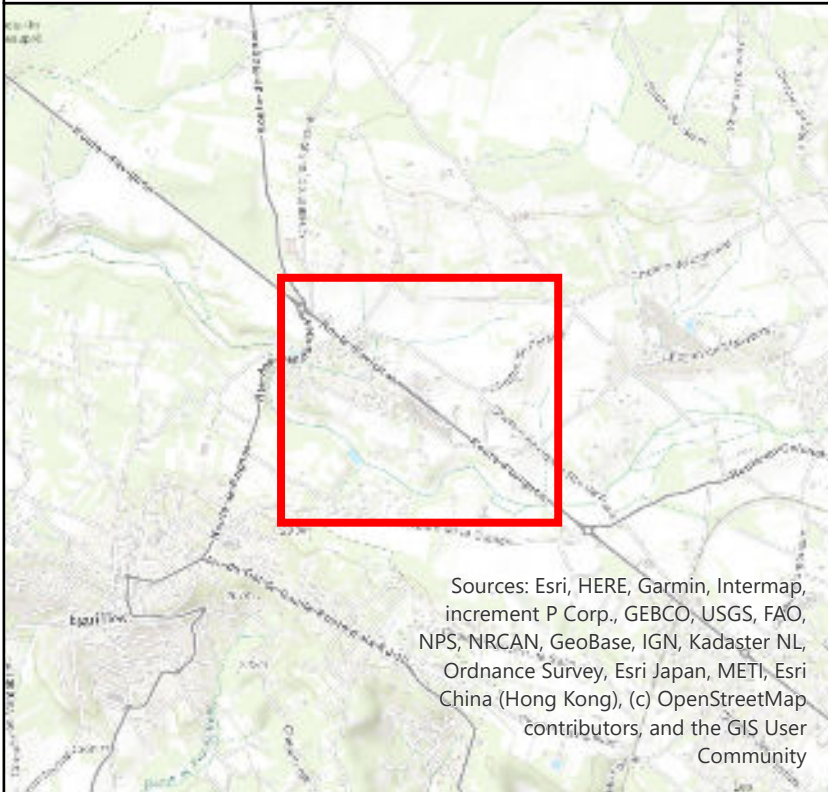
Sources: Esri, HERE, Garmin, Intermap, increment P Corp., GEBCO, USGS, FAO, NPS, NRCAN, GeoBase, IGN, Kadaster NL, Ordnance Survey, Esri Japan, METI, Esri China (Hong Kong), (c) OpenStreetMap contributors, and the GIS User Community







 Périimètre du Droit de Prémption Renforcé



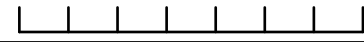
Sources: Esri, HERE, Garmin, Intermap, increment P Corp., GEBCO, USGS, FAO, NPS, NRCAN, GeoBase, IGN, Kadaster NL, Ordnance Survey, Esri Japan, METI, Esri China (Hong Kong), (c) OpenStreetMap contributors, and the GIS User Community



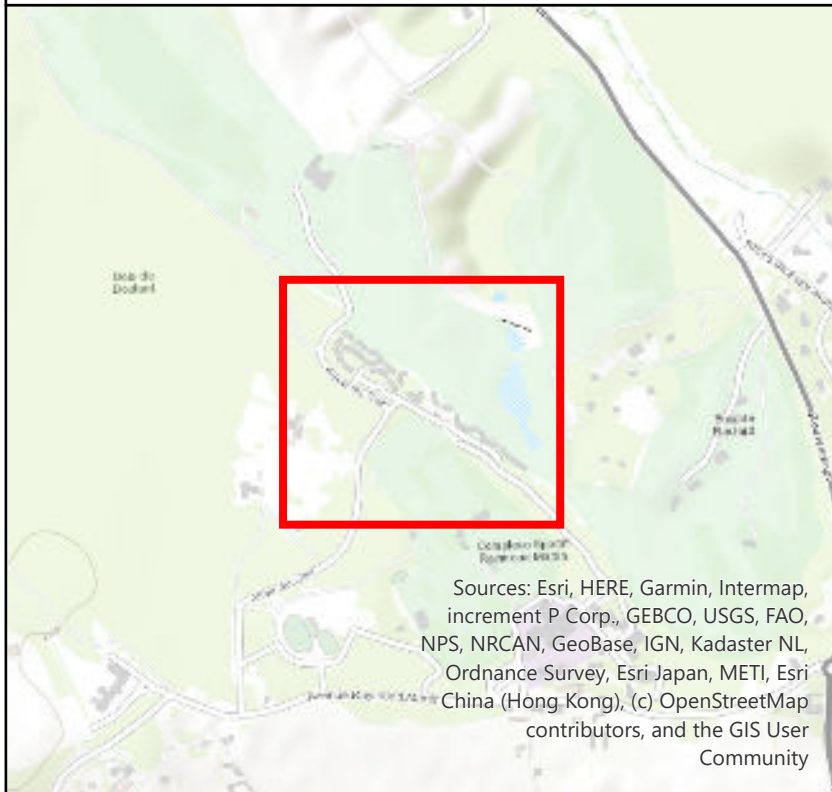




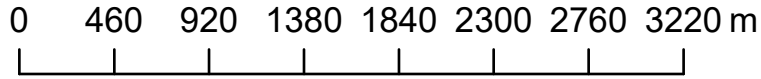
0 10 20 30 40 50 60 70 m



 **Périmètre du Droit de Prémption  
Renforcé**

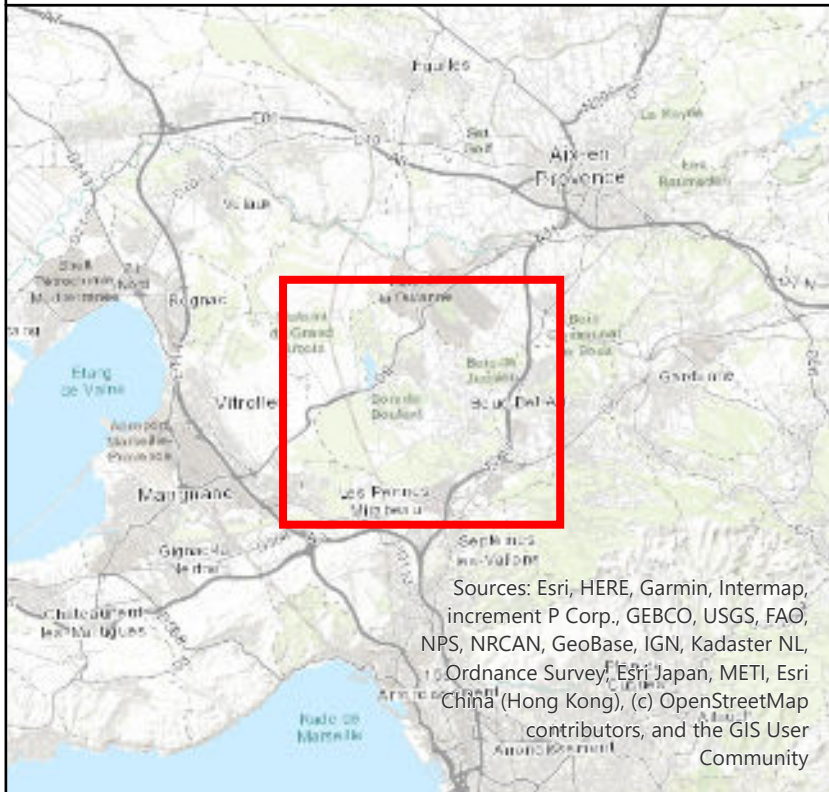
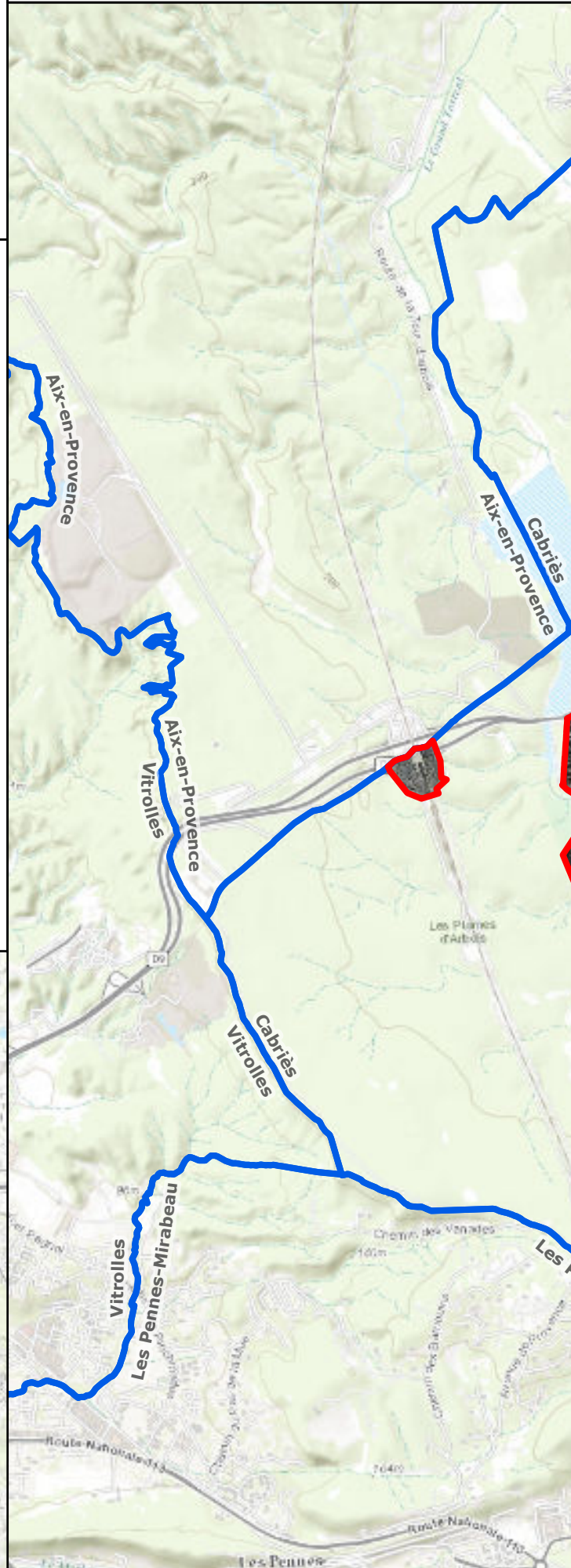


Sources: Esri, HERE, Garmin, Intermap,  
increment P Corp., GEBCO, USGS, FAO,  
NPS, NRCAN, GeoBase, IGN, Kadaster NL,  
Ordnance Survey, Esri Japan, METI, Esri  
China (Hong Kong), (c) OpenStreetMap  
contributors, and the GIS User  
Community



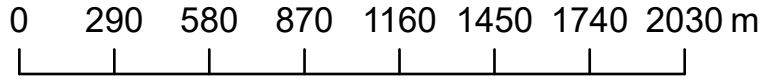
 Périimètre du Droit de Prémption Renforcé

**Plan 10 : CABRIÈS : DPUR Zones U et**



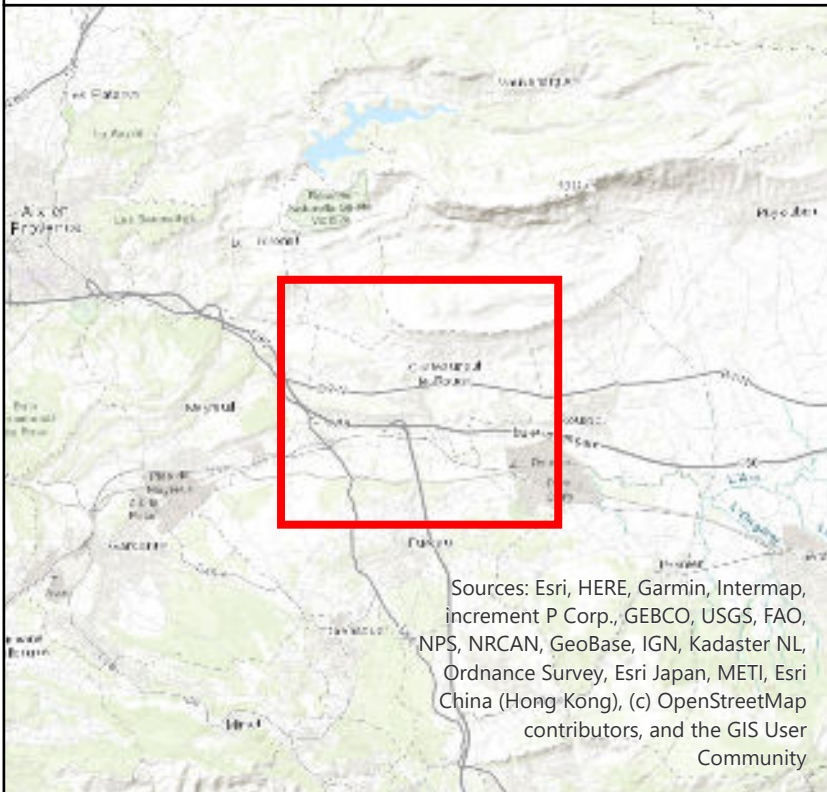
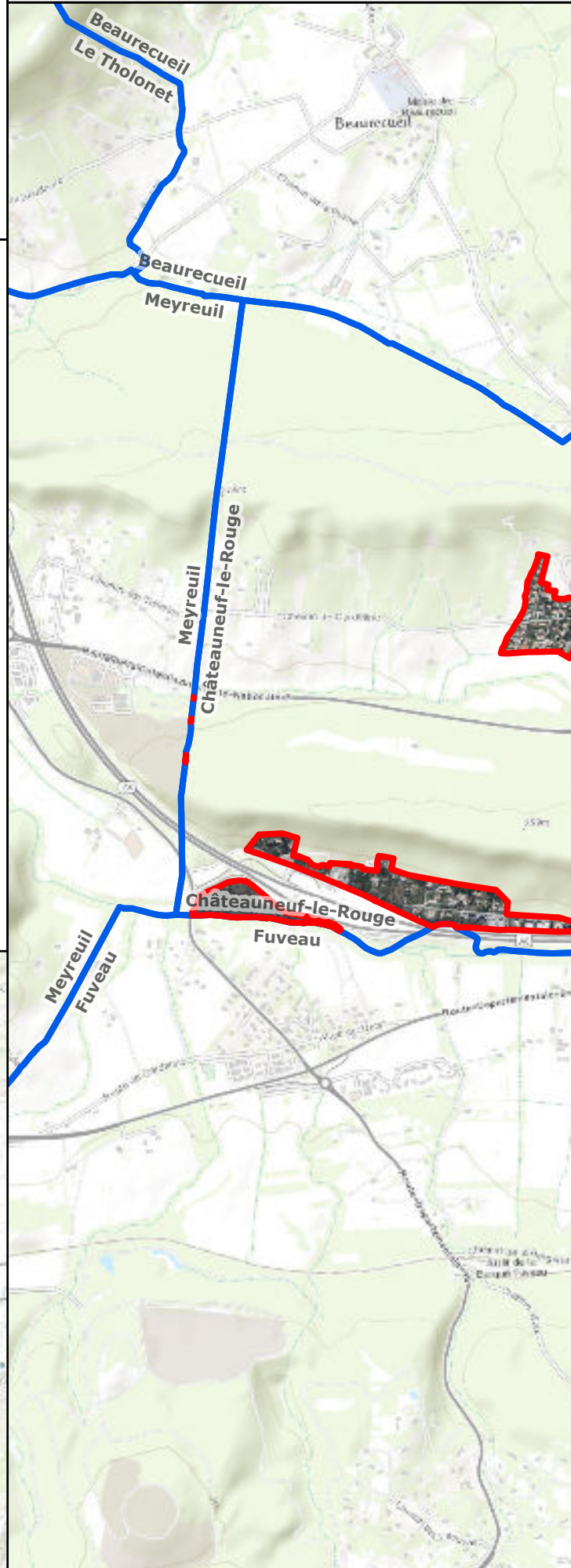
Sources: Esri, HERE, Garmin, Intermap, increment P Corp., GEBCO, USGS, FAO, NPS, NRCAN, GeoBase, IGN, Kadaster NL, Ordnance Survey, Esri Japan, METI, Esri China (Hong Kong), (c) OpenStreetMap contributors, and the GIS User Community

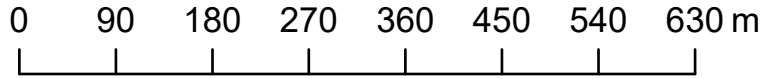




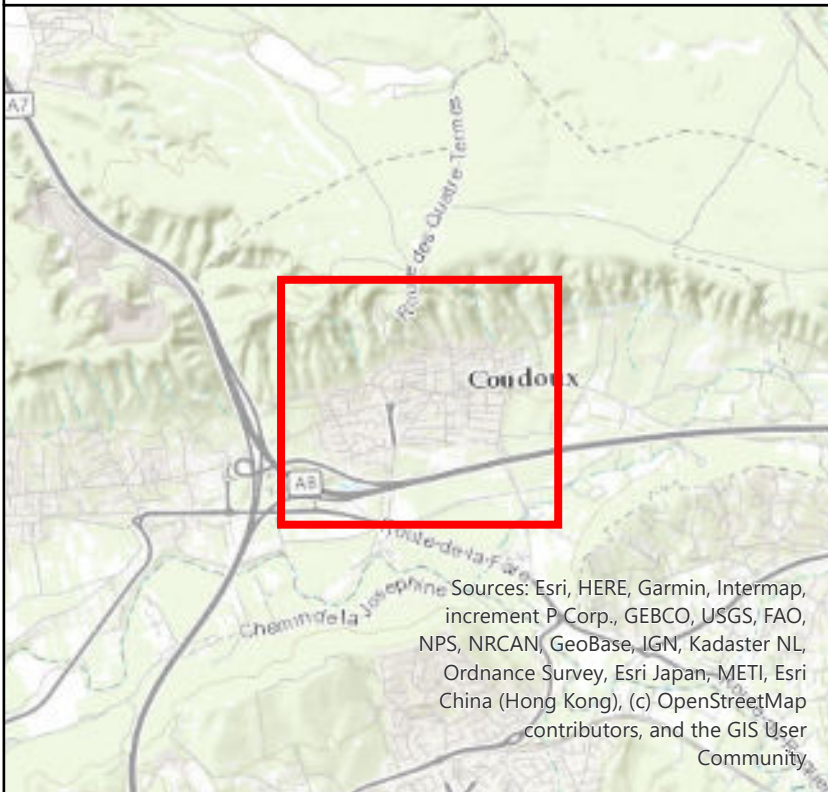
 Périimètre du Droit de Préemption Renforcé

**Plan 11 : CHATEAUNEUF-LE-ROUGE :**



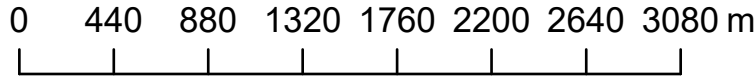


 **Périmètre du Droit de Prémption Renforcé**



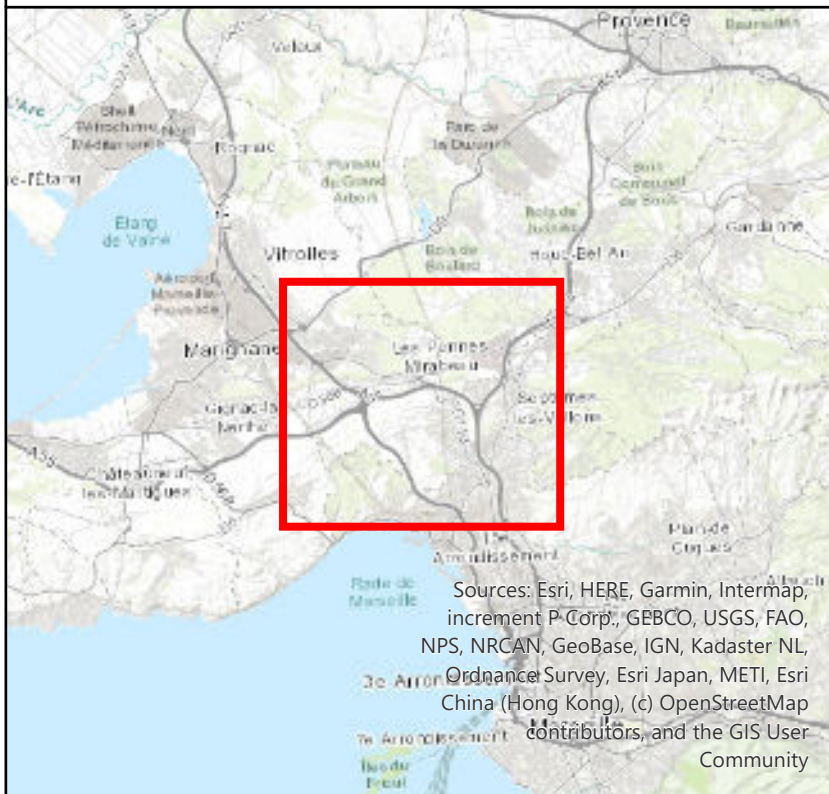
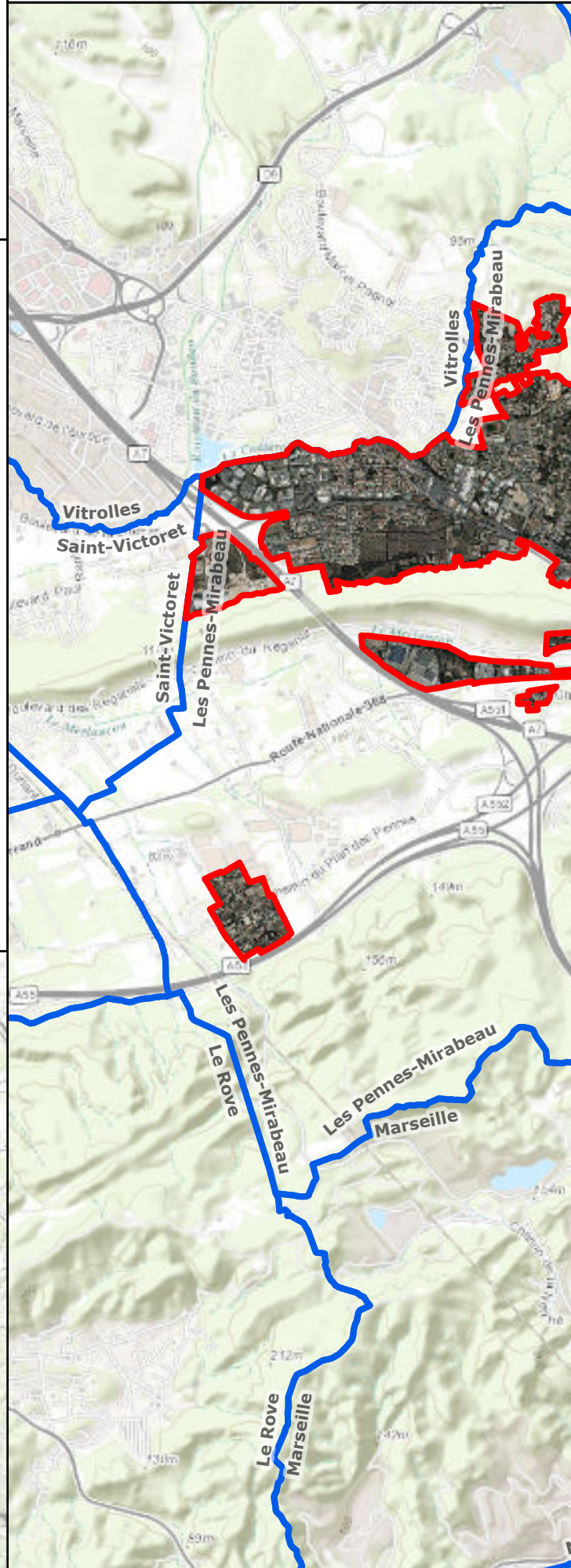
Sources: Esri, HERE, Garmin, Intermap, increment P Corp., GEBCO, USGS, FAO, NPS, NRCAN, GeoBase, IGN, Kadaster NL, Ordnance Survey, Esri Japan, METI, Esri China (Hong Kong), (c) OpenStreetMap contributors, and the GIS User Community

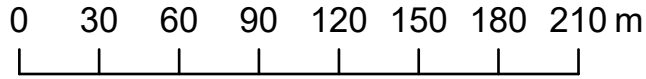




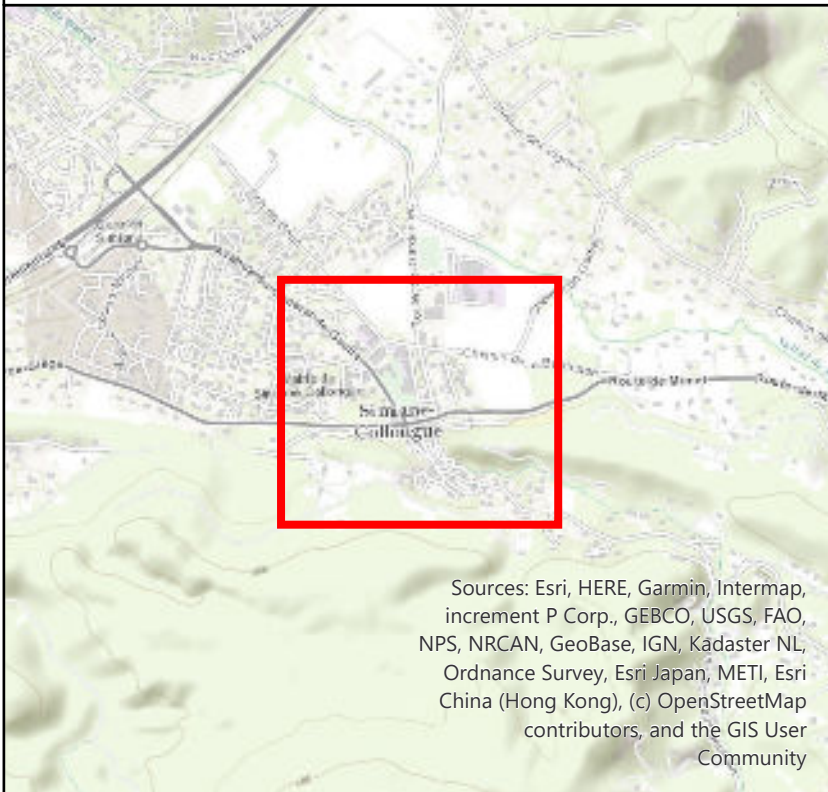
 Périmètre du Droit de Prémption Renforcé

**Plan 13 : LES PENNES-MIRABEAU : D**





 **Périmètre du Droit de Préemption Renforcé**

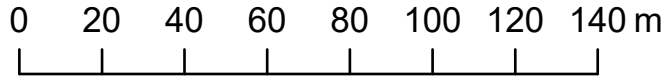


Sources: Esri, HERE, Garmin, Intermap, increment P Corp., GEBCO, USGS, FAO, NPS, NRCAN, GeoBase, IGN, Kadaster NL, Ordnance Survey, Esri Japan, METI, Esri China (Hong Kong), (c) OpenStreetMap contributors, and the GIS User Community

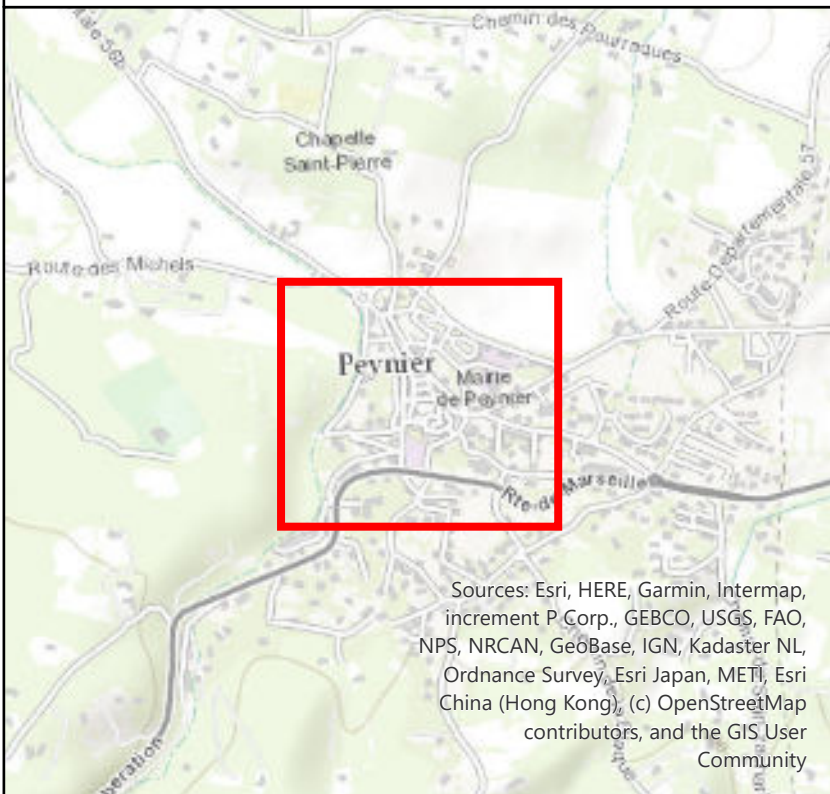
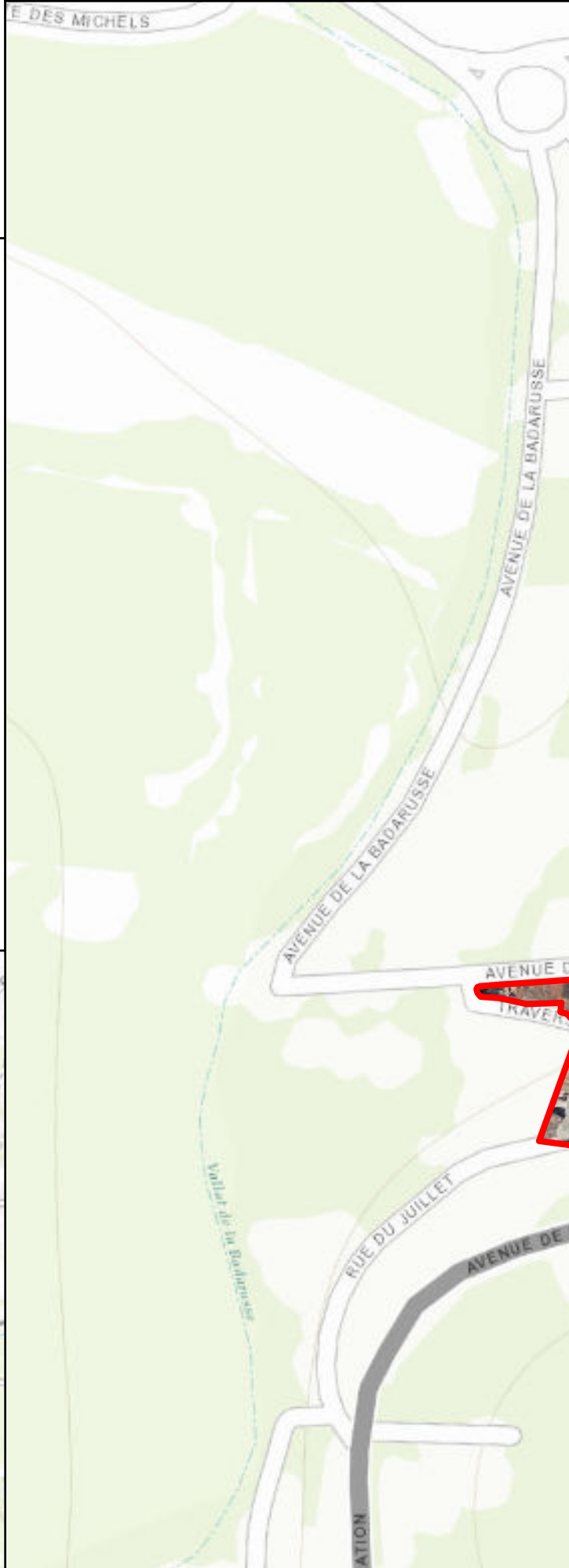






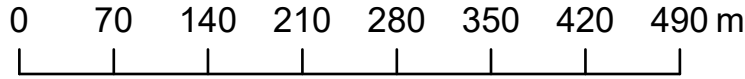


 Périimètre du Droit de Prémption  
Renforcé

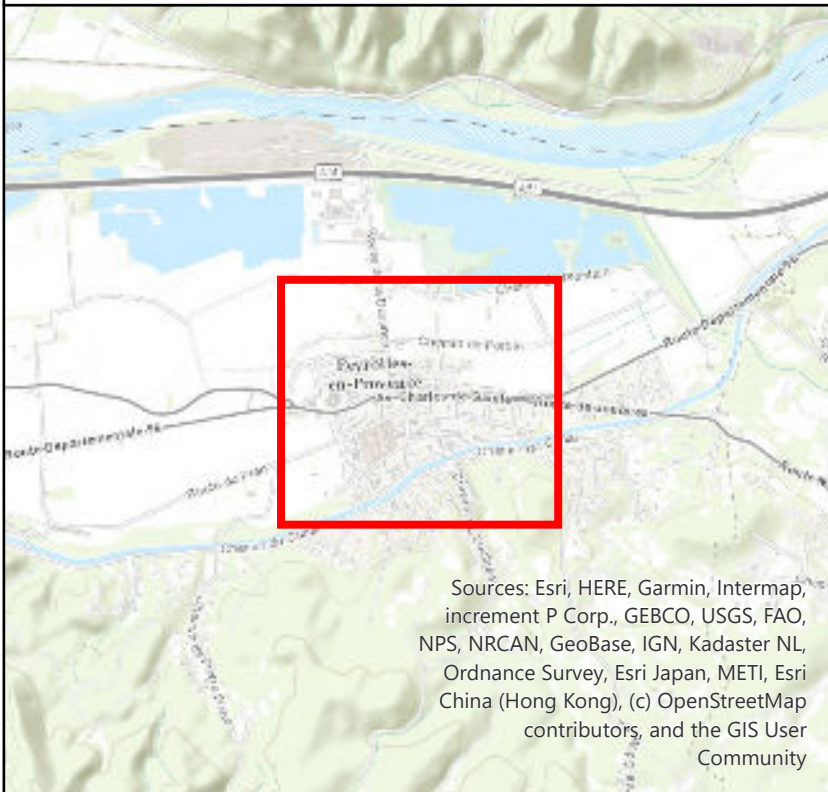


Sources: Esri, HERE, Garmin, Intermap,  
increment P Corp., GEBCO, USGS, FAO,  
NPS, NRCAN, GeoBase, IGN, Kadaster NL,  
Ordnance Survey, Esri Japan, METI, Esri  
China (Hong Kong), (c) OpenStreetMap  
contributors, and the GIS User  
Community

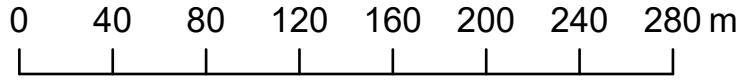




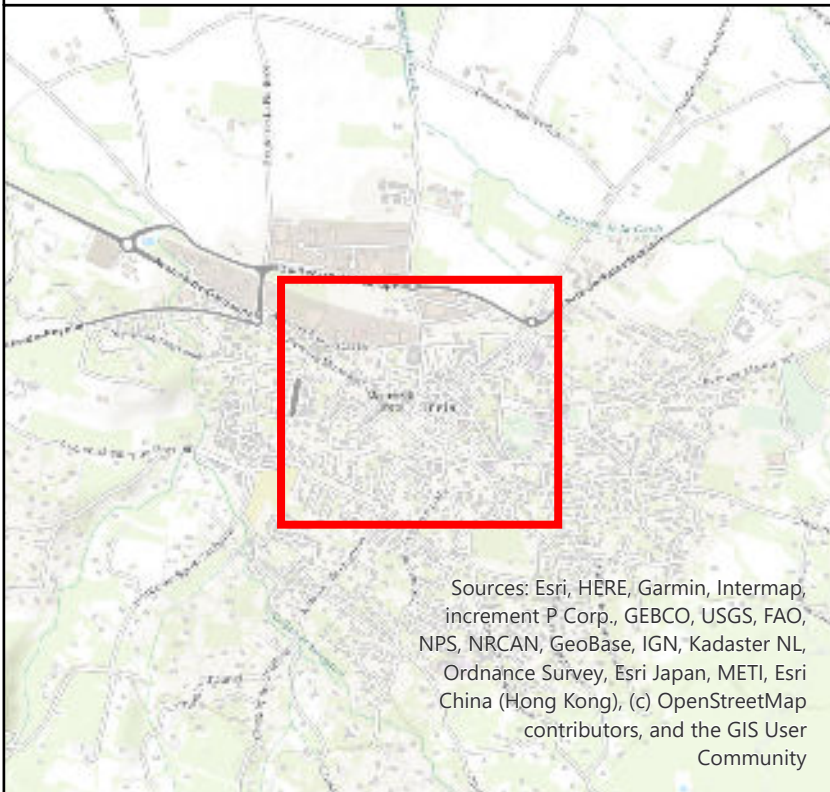
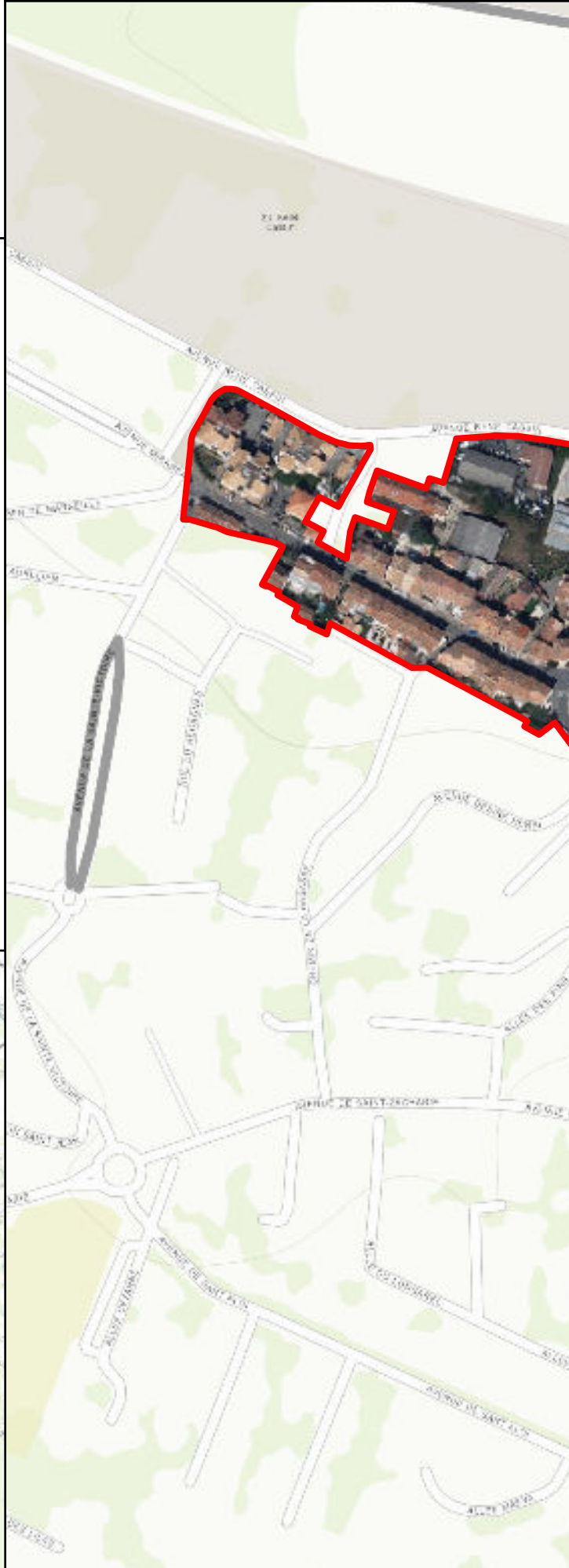
 **Périmètre du Droit de Prémption Renforcé**



Sources: Esri, HERE, Garmin, Intermap, increment P Corp., GEBCO, USGS, FAO, NPS, NRCAN, GeoBase, IGN, Kadaster NL, Ordnance Survey, Esri Japan, METI, Esri China (Hong Kong), (c) OpenStreetMap contributors, and the GIS User Community



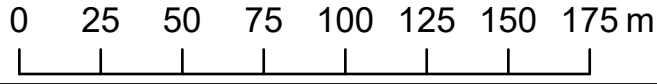
 **Périmètre du Droit de Préemption Renforcé**



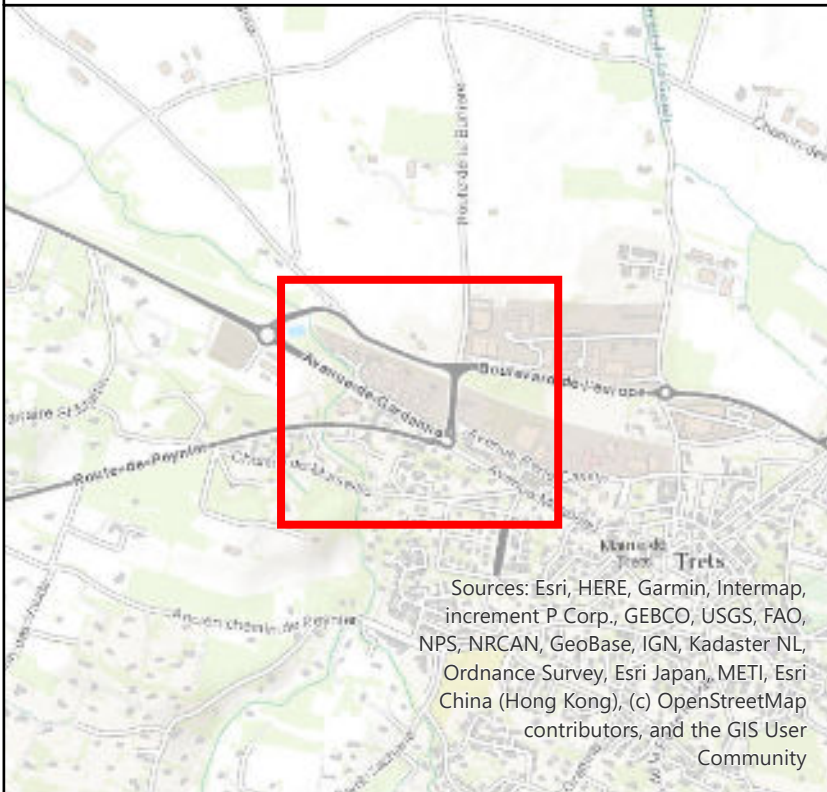
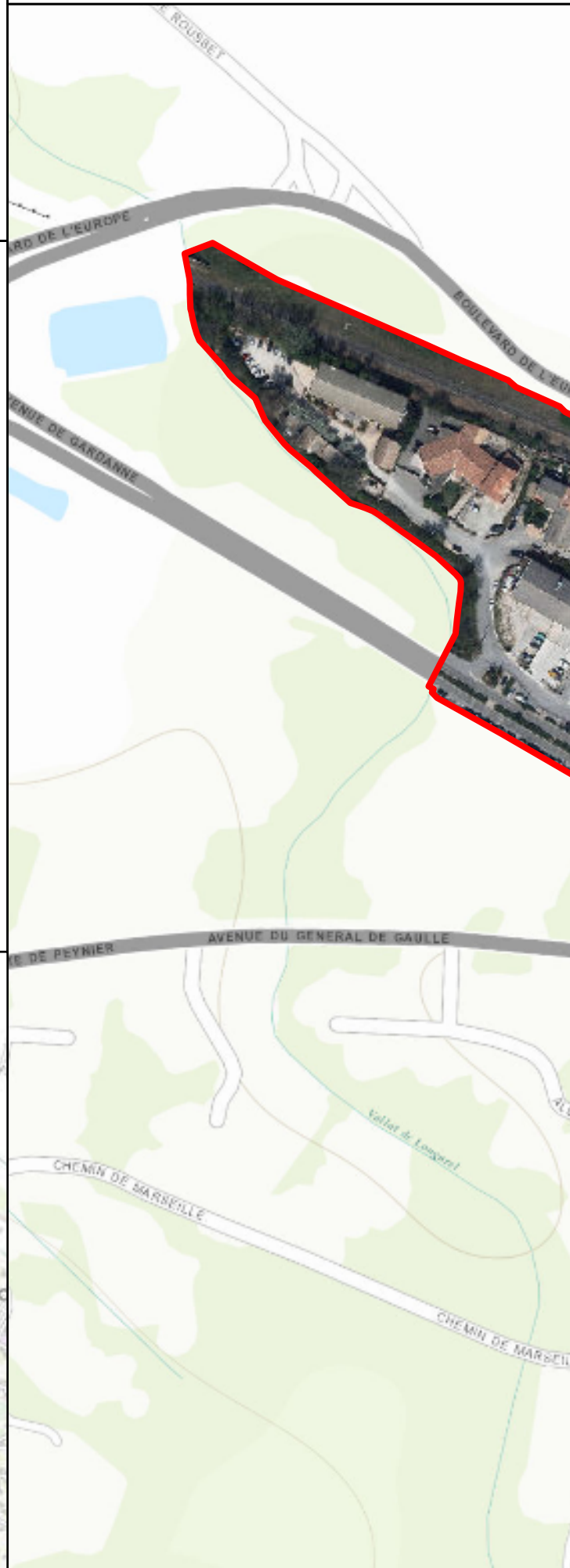
Sources: Esri, HERE, Garmin, Intermap, increment P Corp., GEBCO, USGS, FAO, NPS, NRCAN, GeoBase, IGN, Kadaster NL, Ordnance Survey, Esri Japan, METI, Esri China (Hong Kong), (c) OpenStreetMap contributors, and the GIS User Community





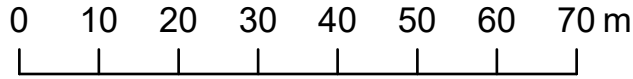


 **Périmètre du Droit de Préemption Renforcé**



Sources: Esri, HERE, Garmin, Intermap, increment P Corp., GEBCO, USGS, FAO, NPS, NRCAN, GeoBase, IGN, Kadaster NL, Ordnance Survey, Esri Japan, METI, Esri China (Hong Kong), (c) OpenStreetMap contributors, and the GIS User Community

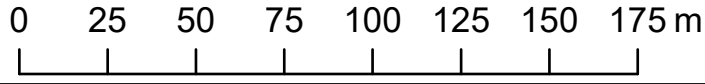




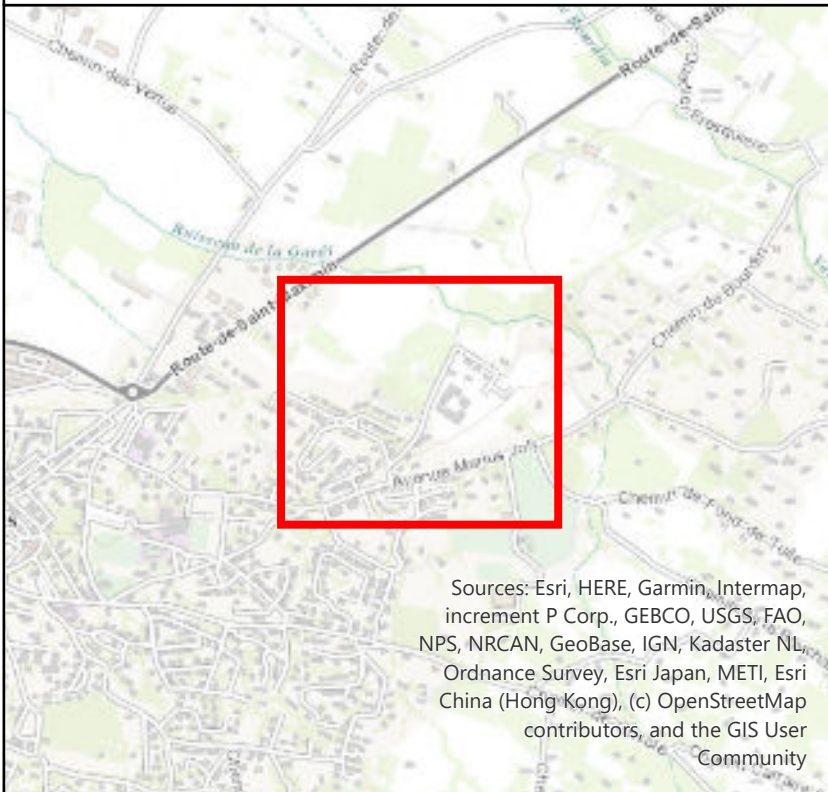
 **Périmètre du Droit de Prémption  
Renforcé**



Sources: Esri, HERE, Garmin, Intermap, increment P Corp., GEBCO, USGS, FAO, NPS, NRCAN, GeoBase, IGN, Kadaster NL, Ordnance Survey, Esri Japan, METI, Esri China (Hong Kong), (c) OpenStreetMap contributors, and the GIS User Community

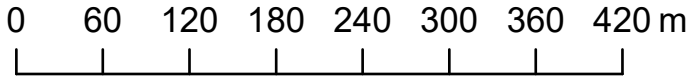


 Périimètre du Droit de Préemption Renforcé

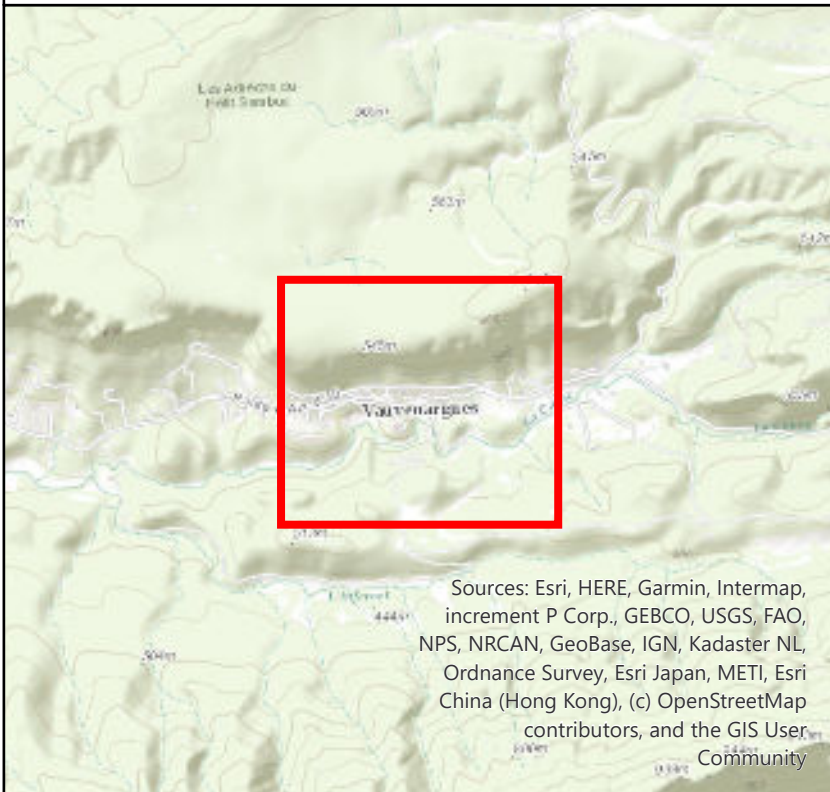
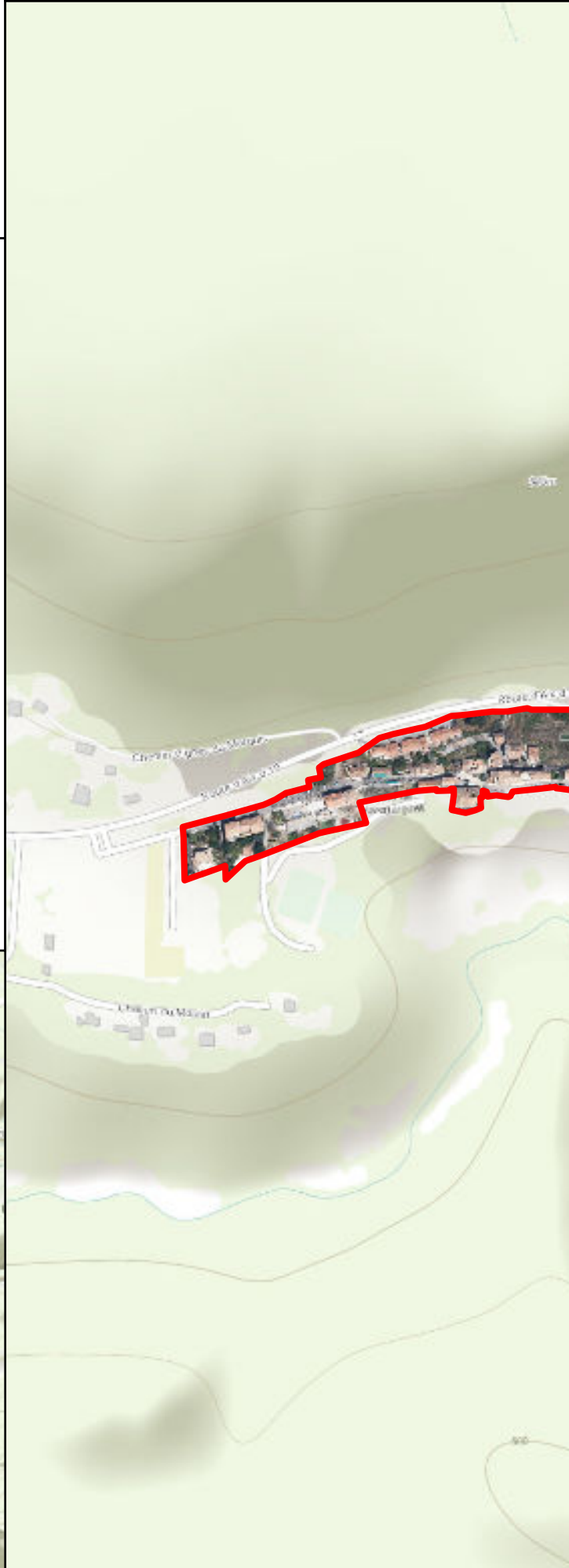


Sources: Esri, HERE, Garmin, Intermap, increment P Corp., GEBCO, USGS, FAO, NPS, NRCAN, GeoBase, IGN, Kadaster NL, Ordnance Survey, Esri Japan, METI, Esri China (Hong Kong), (c) OpenStreetMap contributors, and the GIS User Community

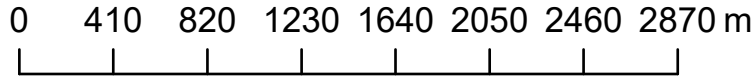




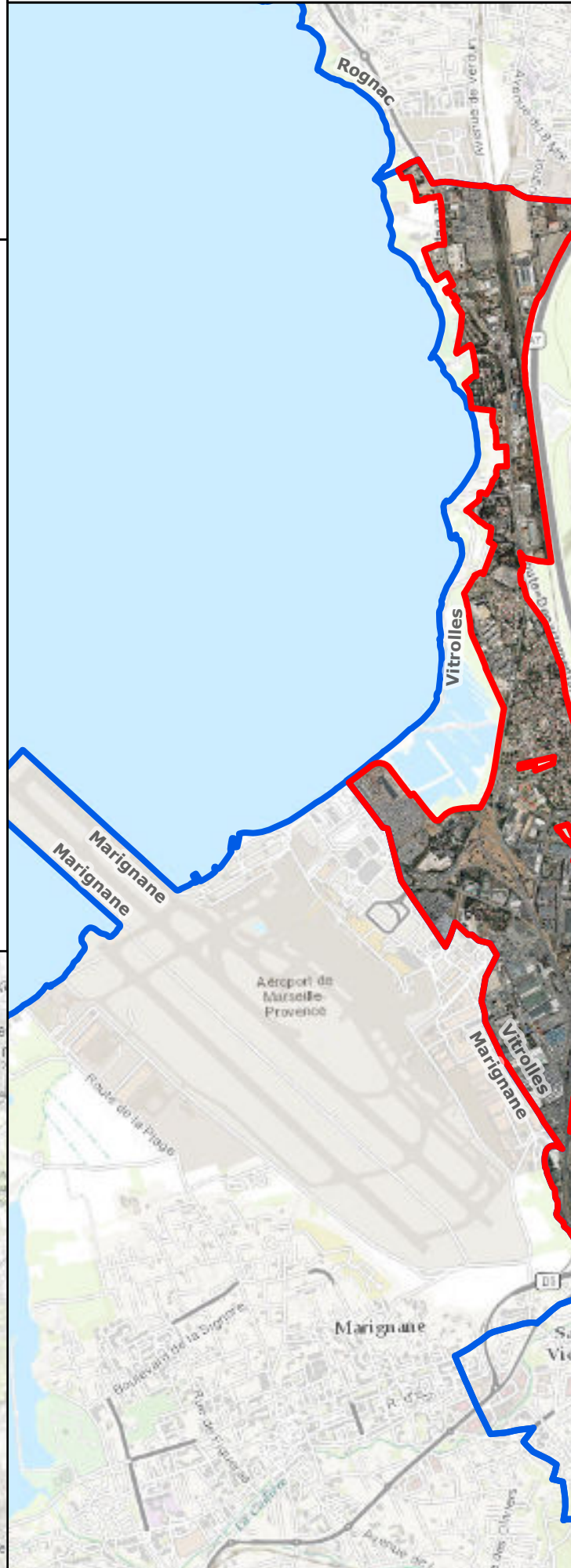
 **Périmètre du Droit de Prémption Renforcé**



Sources: Esri, HERE, Garmin, Intermap, increment P Corp., GEBCO, USGS, FAO, NPS, NRCAN, GeoBase, IGN, Kadaster NL, Ordnance Survey, Esri Japan, METI, Esri China (Hong Kong), (c) OpenStreetMap contributors, and the GIS User Community



 **Périmètre du Droit de Préemption Renforcé**



Sources: Esri, HERE, Garmin, Intermap, increment P Corp., GEBCO, USGS, FAO, NPS, NRCAN, GeoBase, IGN, Kadaster NL, Ordnance Survey, Esri Japan, METI, Esri China (Hong Kong), (c) OpenStreetMap contributors, and the GIS User Community